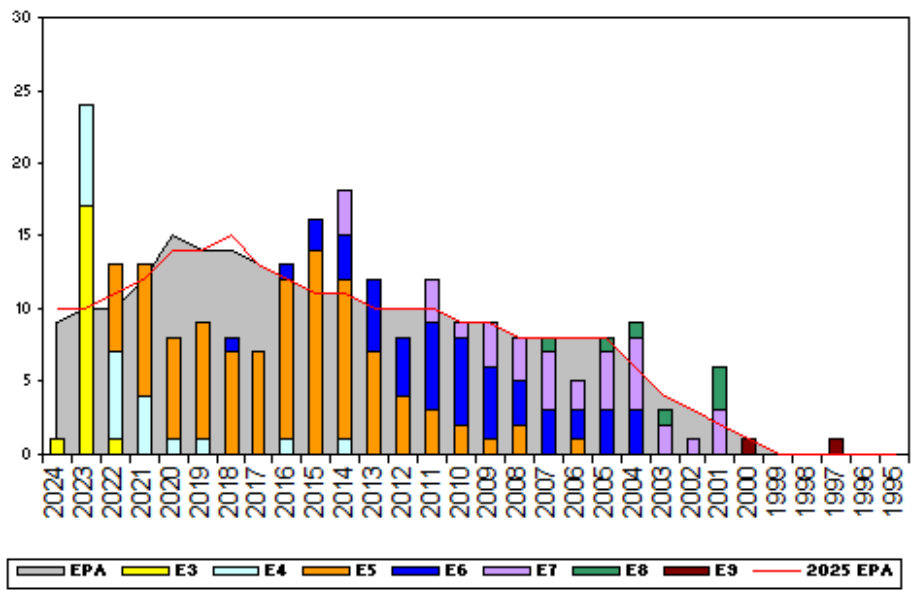


Aviation Maintenance Administrationman, TAR - J170

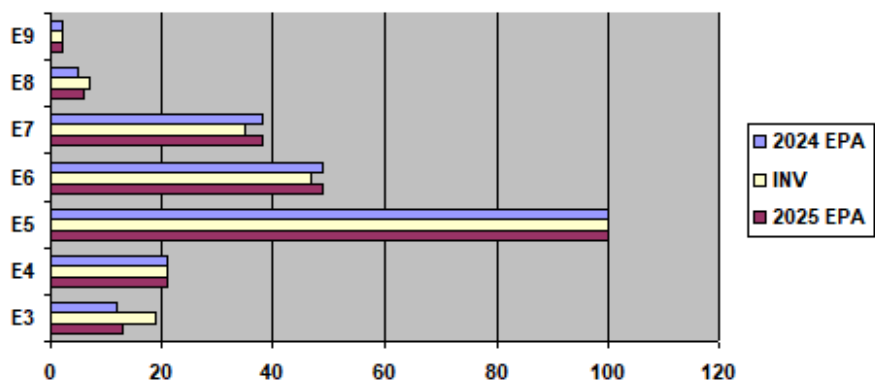


Sea Shore Rotation			FS MANNING			ADV OPP.	
TOUR	SEA	SHORE	PG	SEA	SHORE	AZTAR	All-Navy
E1-3	48	42	E1-3	111.11%	0.00%	TIR	TIR
E4	48	42	E4	127.27%	66.67%	66.67%	58.8%
E5	48	42	E5	100.00%	88.89%	42.86%	47.0%
E6	48	42	E6	87.50%	104.35%	2.44%	15.0%
E7	48	36	E7	105.88%	85.00%	16.67%	24.3%
E8	48	36	E8	400.00%	100.00%	0.00%	5.3%
E9	42	36	E9	0.00%	50.00%	0.00%	20.0%

Zone Information

	ZONE A	ZONE B	ZONE C	ZONE D	ZONE E	ALL ZONES
FY24 Manning:	101%	100%	107%	100%	100%	102%
FYTD RE Rate:	60.00%	80.00%	66.67%	100.00%	0.00%	65.22%
FY25 Manning:	100%	98%	107%	100%	100%	101%

EPA by Paygrade vs Inventory



	E1-3	E4	E5	E6	E7	E8	E9	TOTAL
% INV to FY24 EPA	158%	100%	100%	96%	92%	140%	100%	102%
EPA (FY24)	12	21	100	49	38	5	2	227
INVENTORY	19	21	100	47	35	7	2	231
EPA (FY25)	13	21	100	49	38	6	2	229
% INV to FY25 EPA	146%	100%	100%	96%	92%	117%	100%	101%

NOTES

*****OVERMANNED RATING*****

Current manning is 102% of FY24 Enlisted Programmed Authorizations.

-Convert IN opportunity: NONE.

-Convert OUT opportunity: Contact ECM for options.

****Security clearance is required for this rating****

****Interim clearance documentation must be provided to be considered****

For any questions regarding community health, contact your ECM at robert.e.derbyshire.mil@us.navy.mil.